



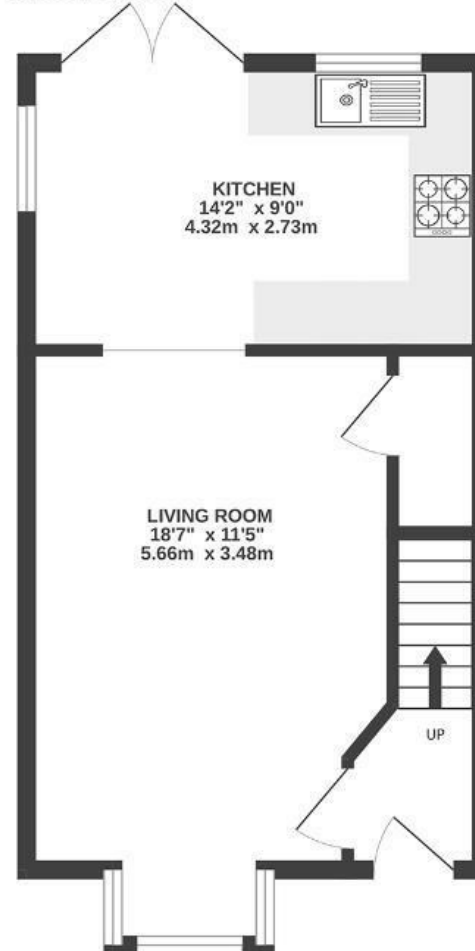
# Daws Court

## FISHPONDS

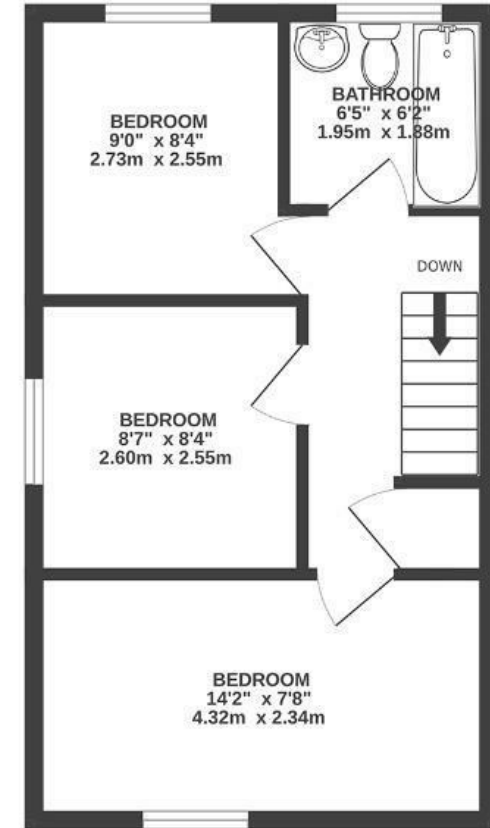
APPROXIMATE FLOOR AREA  
68 SQM / 725 SQFT



GROUND FLOOR



FIRST FLOOR



Boardwalk

# Daws Court

## FISHPONDS, BRISTOL



£350,000



3 Bedrooms



BS16 3DE



1 Bathrooms

*"We have loved growing our family in this home and the garden has been such a special place to make memories for us and our toddler. The space has been perfect all year round for playing and relaxing. We have also loved the proximity to Fishponds high street and the cycle path, with everything we have needed on our doorstep. We still feel tucked away in our little group of houses and know all our neighbours."*

